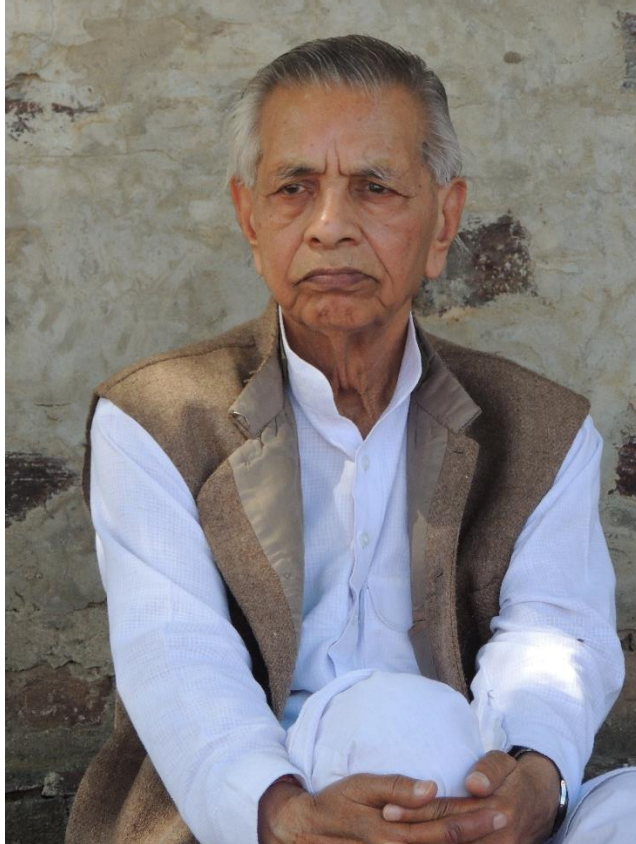


SCRIA
ANNUAL
REPORT
2022 - 2023





Shri Avadhesh Kumar
1931 - 2022

Chairperson and member of SCRIA from 1992 - 2022

A social worker at heart who practiced Gandhian values all his life.
A guide, a mentor and an inspiring leader for SCRIA's team since 1984.
He always encouraged us to experiment & innovate in our initiatives.
We will miss his leadership.

Om Shanti 🙏

विषय सूची Contents

SCRIA के बारे में About SCRIA

हमारी पहलें
Our Initiatives

प्रभाव Impact

स्वयंसेवी Volunteers

स्थानीय पहल Local Initiatives

परिवर्तन दूत Change Makers

Publications
Supportive services

वित्तीय जानकारी Financial Report

संस्थान The Organization

रिपोर्ट का प्रकाशन **Published by**
SCRIA, Khori 123101, District Rewari, Haryana
सितम्बर 2023 September 2023

ज़िम्मेदारी सुन्दर लाल — कार्यकारी निदेशक
Responsible Sunder Lal - Executive Director

रिपोर्ट लेखन व प्रारूप सेनू
Report written & designed by Senoo



SCRIA के बारे में About SCRIA

हमारी दृष्टि स्थानीय समुदाय द्वारा सतत ग्रामीण विकास

Our Vision Sustainable development in rural areas by local communities

हमारा लक्ष्य विकास व शासन की प्रक्रियाओं में स्थानीय समुदाय की अर्थपूर्ण भागीदारी के लिये उनकी क्षमताओं का विकास करना

Our Mission Building capacities of local communities for meaningful participation in governance & development processes

पहुंच का क्षेत्र 1210 गांव जो दक्षिण हरियाणा के रेवाड़ी, महेन्द्रगढ़, झज्जर, चरखी दादरी जिलों और उत्तर राजस्थान के चुरु जिलों में हैं

Outreach Area 1210 villages in the districts of Rewari, Mahendergarh, Jhajjar, Charkhi Dadri in south Haryana and Churu in north Rajasthan

पहुंच के जन सामाजिक व आर्थिक रूप से पिछड़े समुदाय, ग्राम सभा सदस्य, पंचायती राज संस्थाओं के प्रतिनिधि – खासतौर पर महिलाएं व नागरिक

Outreach People Economically & socially disadvantaged communities, members of Gram Sabha, representatives of Panchayati Raj Institutions - specially women, like minded civil society organizations and citizens'

केन्द्र बिन्दु समुदाय के साथ कार्य करने पर जिससे वह प्रगति में सहयोगी हों। महिलाएं, पुरुष, किशोर व युवा पहलों में भागीदार होते हैं जिससे प्रभाव लम्बे समय रहता है, लागत में हिस्सेदारी होती है, स्थानीय पहलें होती हैं और ग्राम स्तर पर प्रबन्धन क्षमताओं में बढ़ोतरी

Focus It's on working with communities for a meaningful relationship as partners in progress. Women, men, teens & youth are involved in programs that leads to community ownership, cost sharing, self-reliance, grass root initiative and enhanced village level organizational capacities.



हमारी पहलें Our Initiatives

पहुंच के कार्यक्षेत्र के नागरिकों की जिन्दगी में गुणात्मक व संख्यात्मक सुधार के लिये SCRIA नागरिकों को एक मूक ग्रहणकर्ता की जगह शासन व विकास की प्रक्रियाओं में पहल कर प्रबन्धक बनाने के लिये प्रयासरत है। इसके लिये SCRIA महिलाओं, पुरुषों, किशोर व युवाओं की क्षमताओं का विकास करती है जिससे वह अपनी समस्याओं को पहचानें व सुस्पष्ट करें, उसके निपटान का हल खोजें और स्थानीय पहलों के लिये संसाधन जुटाएँ। कार्यक्रमों के लागत में समुदाय की हिस्सेदारी और सामाजिक अंकेक्षण व सहभागी प्रभाव आंकलन के द्वारा संस्थान अपने कार्यकलापों में अधिक पारदर्शिता, निरंतरता व समुदायिक वचनबद्धता सुनिश्चित करती है। इसके अतिरिक्त समुदाय से स्वेच्छिक स्वयंसेवी निरंतर कार्यक्रमों में महत्वपूर्ण भूमिका निभाते हैं। राष्ट्रीय प्रयासों व क्षेत्र की समस्याओं के मद्देनज़र SCRIA की मुख्य पहलें लिंग समानता, स्वशासन, आजीविका व प्राकृतिक सम्पदा के प्रबन्धन से सम्बन्धित हैं।

For bringing qualitative & quantitative improvement in the lives of citizens in its outreach region SCRIA works towards transforming them from being passive recipients to initiators and managers of governance & development processes. For this purpose, SCRIA facilitates capacity building of women, men, youth & teenagers to identify & articulate their own problems, find ways to tackle them, generate - mobilize resources for initiating & implementing local initiatives. Sustainability, community's ownership, accountability and probity in initiatives' is further fortified by cost sharing, annual social audit of SCRIA's programs, participatory impact monitoring & involvement of voluntary community volunteers. In concurrence with the national policies and problems of the region SCRIA has organized its' work around key initiatives of gender equality, governance, livelihood & natural resources management known as Swavlambini, Svashaasan, Svajeevika & Sampada Prakritik respectively.



दृष्टि लिंग समानता को मुख्यधारा में लाना

लक्ष्य

- सामाजिक, राजनैतिक, आर्थिक व विकास की प्रक्रियाओं में अपने अधिकार, हक व न्याय लेने के लिये महिलाओं को सशक्तिकरण के अवसर देना
- लिंग समानता के लिये समर्थक वातावरण बनाना
- महिलाओं के मुद्दों व विचारों को समाज की मुख्यधारा में प्रोत्साहित करना

विकास के लिये पहले

सक्रिय स्वावलम्बन महिलाओं को महिलाओं के अधिकार, हक व लिंग न्याय के लिये संवेदनशील करना

सक्रिय समानता ग्राम सभा में लिंग समानता व लिंग परिपेक्ष से सम्बंधित मुद्दों को प्रोत्साहन

सक्रिय शक्ति लिंग व घरेलू हिंसा, आदि से त्रस्त महिलाओं की सहायता के लिये सामाजिक योद्धा

सक्रिय लिंग अंकेक्षण महिलाओं की स्थिति जानने के लिये दृष्टिकोण व व्यवहार का मानचित्रण

2022 - 23 में पहुंच व गतिविधियां

• सामान्य पहुंच के गांव	778
• सघन पहुंच के गांव	432
• सक्रिय शक्ति महिला नेत्रियां	868
• क्षमता वर्द्धन गतिविधियां	
• कार्यशाला / प्रशिक्षण	56
• नागरिक संवाद	96
• अभियान	1
• महिला दिवस	1
• लिंग समानता दिवस	1
• लिंग हिंसा विरोध दिवस	1
• लिंग समानता सर्वे गांव	222
• शक्ति कोष राशी	₹77,099

Vision Mainstreaming gender equality

Mission

- Empowerment opportunities to women to seek their rights, entitlement & justice in social, political, economic and developmental processes
- Facilitate an enabling environment for gender equality
- Promote mainstreaming of women's issues

Development initiatives

Sakriya Swavlamban Sensitizing women on women's rights, entitlements & gender justice

Sakriya Samaanta Promotion of issues of gender equality & gender perspective among Gram Sabha members'

Sakriya Shakti Social warrior supporting victims of gender & domestic violence, social intolerance, etc.

Sakriya Gender Audit Mapping gender attitudes & practices to ascertain the status of women in family & society

Outreach & events facilitated in 2022 - 23

• General outreach villages	778
• Intensive outreach villages	432
• Sakriya Shakti [women leaders]	868
• Capacity building activities	
- workshops/ trainings	56
- citizens' dialogues	96
- campaigns	1
- mahila diwas	1
- gender equality diwas	1
- end gender violence diwas	1
• Gender Audit villages	222
• Shakti Kosh amount	₹77,099

स्वावलम्बिनी Swavlambini
[Self reliant]



दृष्टि सम्मिलित व जवाबदेही शासन

लक्ष्य शासन की निर्णय लेने वाली प्रक्रियाओं में महिलाओं व अन्य नागरिकों की अर्थपूर्ण भागीदारी

विकास के लिये पहलें

सक्रिय मंच गांव स्तरीय मंच गांव में विभिन्न मुद्दों पर स्थानीय पहलों के लिये

सक्रिय प्रतिनिधि व पंचायत पंचायती राज व्यवस्था में निर्वाचित महिला प्रतिनिधि व अन्य सदस्य शासन व विकास की प्रक्रियाओं को सम्मिलित व जवाबदेही बनाने के लिये प्रयासरत

सचेत नागरिक सामरिक महत्व के मुद्दों में नागरिकों की समझ बनाना

सक्रिय सामाजिक अंकेक्षण व जन सुनवाई ग्राम सभा द्वारा गांव में विकासात्मक पहलों, सार्वजनिक सुविधाओं और सेवाओं का आंकलन व अवलोकन को प्रोत्साहित करना

2022 – 23 में पहुंच व गतिविधियां

• सामान्य पहुंच के गांव	778
• सघन पहुंच के गांव	432
• महिला संगठन गांव में	108
• क्षमता वर्द्धन गतिविधियां	
• कार्यशाला / प्रक्षिण	53
• नागरिक संवाद	1
• अभियान	1
• सूचना कैम्प	49
• सक्रिय मंच	432
• सक्रिय मंच सहयोगी	1267
• ग्राम स्तरीय कमेटियां सक्रिय की	3172
• मंच द्वारा स्थानीय पहल	3714

Vision Inclusive and accountable governance

Mission Meaningful participation of women & other citizens' in decision making processes of governance

Development initiatives

Sakriya Manch An intra village platform for local initiatives on various issues

Sakriya Pratinidhi Elected women & other representatives of Panchayati Raj Institutions making governance & development inclusive & accountable

Sachet Naagrik

- Sensitizing citizens on issues of critical importance
- Gram Sabha members monitoring & reviewing the status of development initiatives, public facilities & services in their villages

Sakriya Samajik Ankeshan va Jan Sunwai

Promote social audit & public hearing by Gram Sabhas of development initiatives, public programs & facilities in their respective village

Outreach & events facilitated in 2022 - 23

• General outreach villages	778
• Intensive outreach villages	432
• Sangathans' in villages	108
• Capacity building activities	
- workshops/ trainings	53
- citizens' dialogues	1
- campaigns	1
• Information Camps	49
• Sakriya Manch	432
• Sakriya Manch Sahyogi	1267
• Village level Committees activated	3172
• Local Initiatives by Manch	3714

स्वशासन Svashaasan
Self governance



दृष्टि प्राकृतिक संसाधनों का प्रभावी व सतत प्रबंधन

लक्ष्य जल, मिट्टी, वनस्पति, चारा व ईंधन के प्रभावी प्रबंधन के लिये ग्राम समुदाय का सशक्तिकरण

विकास के लिये पहले

सक्रिय जल सम्पदा बरसाती जल संग्रहण तंत्र, भूजल पुनर्भरण, उचित प्रबंधन व उपयोग

सक्रिय स्वच्छता घरों व समुदाय स्तर पर बेहतर स्वच्छता के लिये ग्राम समुदाय को संवेदनशील बनाना और उन्हें शौचालय, सोखता गड़ढा व कम्पोस्ट निर्माण के लिये तकनीकी व आर्थिक सहायता प्रदान करना

सक्रिय कृषक किसानों व पशुपालकों के लिये शुष्क खेती के तरीके व पशुपालन प्रबंधन के गुर समझने व अपनाने का अवसर

सक्रिय सामलात सम्पदा सामलात भूमि व संसाधनों का समुदाय द्वारा सतत प्रयोग द्वारा सतत प्रबंधन

2022 – 23 में पहुंच व गतिविधियां

• सामान्य पहुंच के गांव	778
• सघन पहुंच के गांव	432
• क्षमता वर्द्धन गतिविधियां	
• कार्यशाला / प्रक्षिण	1
• अभियान	—
• नागरिक संवाद	1
• उन्नत खेती हैक्टेयर	1170
• प्राकृतिक खेती परिवार	400
• जैविक कम्पोस्ट	270
• गन्दे पानी का प्रबंधन — गांव	105

Vision Effective and sustainable natural resource management

Mission Empowerment of village communities for efficient management of water, soil, vegetation, fodder & fuel

Development initiatives

Sakriya Jal Sampada Promote rain harvesting systems, ground water recharging & prudent management

Sakriya Svachta For improved sanitation at household & community level

Sakriya Krishak An opportunity for farmers and livestock holders to learn & adopt improved dry land agricultural practices & livestock management

Sakriya Samlaat Sampada Sustainable management & use of common lands and natural resources' assets

Outreach & events facilitated in 2022 - 23

• General outreach villages	778
• Intensive outreach villages	432
• Capacity building activities	
• workshops/ trainings	1
• campaigns	-
• dialogs	1
• Improved cultivation, bunding [hac.]	1170
• Natural farming [families]	400
• Organic composting	270
• Waste water management [villages]	105

सम्पदा प्राकृतिक Sampada Prakritik Natural Resources



दृष्टि आर्थिक सशक्तिकरण व सम्मिलन

लक्ष्य महिलाओं व अन्यो को उद्यम व उद्यमिता के अवसर प्रदान करना

विकास के लिये पहलें

सक्रिय संचय सक्रिय संगठन के सदस्यों के लिये बचत व ऋण प्रक्रिया

सक्रिय उधमी महिलाओं के लिये सूक्ष्म उधम की पहल का अवसर

सक्रिय शिक्षा ग्रामीण युवतियों व युवकों को उच्च शिक्षा व तकनीकी प्रशिक्षण प्राप्त करने के लिये सहयोग और आमजन को आर्थिक व वित्तीय मुद्दों पर संवेदनशील करना

2022 – 23 में पहुंच व गतिविधियां

• पहुंच के गांव	108
• महिला संगठन	108
• सदस्याएँ	1,137
• संगठनों के पास बचत	₹1,62,61,000

Vision Economic empowerment and inclusion of women & others

Mission Provide opportunity to women & others for micro enterprise & entrepreneurship

Development initiatives

Sakriya Sunchay A saving & credit activity for members of Sakriya Sangathans

Sakriya Udyami An opportunity for women entrepreneurs to start micro enterprise

Sakriya Shiksha A financial opportunity for young women & men interested in attaining technical or higher education and sensitization of people on financial & economic issues

Outreach & events facilitated in 2022 - 23

• Outreach villages	108
• Sangathans	108
• Members	1,137
• Savings w/ groups	₹ 1,62,61,000

स्वजीविका Svajeevika
Self livelihood



प्रभाव Impact

वांछित परिवर्तन को जानने के लिये व विकासात्मक प्रक्रियाओं से उत्पन्न प्रभावों व बदलावों पर समीक्षात्मक रूप से मंथन करने के लिये SCRIA ने अपने कार्यक्रमों के लिये सहभागी प्रभाव आकलन को नियमित वार्षिक घटक बनाया है। इसके लिये प्रभाव, सूचक, जानकारी एकत्र करने की पद्धति व विश्लेषण प्रक्रिया स्थापित की है। प्रभाव आकलन संस्था द्वारा संगठित महिला संगठनों/ मंचों के साथ मिलकर किया जाता है। पहुंच के समुदायों में SCRIA द्वारा संचालित पहलों के प्रभाव को कुछ सूचकों के साथ नीचे दर्शाया है।

To monitor the ultimate desired change and for critical reflection on the effects and changes caused by development interventions SCRIA has made participatory impact monitoring a regular annual feature for its programs. For this purpose, impacts, indicators, tools for data collection and analysis have been established. Impact monitoring is done with the active involvement of women groups/ Manch facilitated by the organization. Given below are some impacts along with indicators indicating the extent to which initiatives facilitated by SCRIA have had an impact on outreach communities.

1 Impact Increased awareness among people regarding gender inequality due to visible & hidden discrimination

Indicators	2021	2022
% of villages where at least 10 women & 20 men are adopting steps for gender equality	62.86	60.39
% of villages where Panchayat took steps for promoting gender equality in village	35.17	52
% of villages where at least 6 local initiatives undertaken for reducing gender discrimination	23	29.25
no. of men involved per local initiative for reducing gender discrimination	16	15.41

2 Impact Increased efforts for checking visible and hidden violence against women

Indicators [average for per village]	2021	2022
% of villages where at least 5 local initiatives were undertaken for ending VAW/G	30.7	18.75
no. of men involved per local initiative for ending VAW/G	11.7	12.94
% of village schools where committees for addressing sexual harassment are activated	80.3	73.6
% of villages where social & institutional processes are activated for victims of VAW/G	84.56	93
% of villages where community & Panchayat provided support to women victims	71.8	51.40

3 Impact Increased participation of women in governance & development processes

Indicators	2021	2022
% of villages where 4 development committees are active with 40% women members	59.53	41.68
% of villages where 70% women PRI members are involved in village planning processes	22.9	58.52
% of villages where at least 30% women are involved in planning & implementation of development initiatives	33.9	34.72

4 Impact Increase in social, political and development initiatives at village level

Indicators	2021	2022
------------	------	------

% of villages where at least 5 initiatives undertaken on social, political & development issues	60.45	60.37
% of villages where at least 4 initiatives undertaken for improving public services resources	45.1	55.35

5 Impact Increased awareness among people on sustainable management of natural resources

Indicators	2021	2022
% of villages involved in initiatives for sustainable revival & management of natural resources	100	84
% of villages where initiatives for cleanliness and waste management were undertaken	100	96.52
% of villages where committees for sustainable management of natural resources are active that have at least 30% women members	74.73	89.45



स्वयंसेवी Volunteers

SCRIA की विभिन्न पहलों में सफलता का राज है स्वयंसेवी – पहुंच के क्षेत्र से वो किशोर, युवा, महिलाएँ व पुरुष जो स्वेच्छा से अभियान, चेतनाशील कार्यक्रम, सामूहिक सिफारिश, हिंसा पीड़ित महिला को सहयोग, सामूहिक संपत्ति विकास व सामुदायिक पहलों जैसे शासन व विकास की प्रक्रियाओं को सम्मिलित व जवाबदेही और जन सेवाओं व कार्यक्रमों को प्रभावी बनाने में साझेदार होते हैं।

A significant share of success in SCRIA's various initiatives is due to its outreach constituents, children - youth - women - men, who willingly partner as volunteers with SCRIA in community initiatives like campaigns, community sensitization & motivation, collective advocacy, support to women victims of violence, community asset development and in local initiatives for inclusiveness & accountability in governance & developmental processes and for making public services functional.

- नियमित योगदान देने वाले 1027 स्वयंसेवी हैं, 553 महिलाएँ व 474 पुरुष
- रिपोर्ट वाले कार्य वर्ष में 133 स्वयंसेवियों ने 713 कार्य दिवस का योगदान दिया
- जिसमें 61 महिलाओं का योगदान 326 कार्य दिवस था और 72 पुरुषों का 387 कार्य दिवस
- इस योगदान को जब न्यूनतम मजदूरी से जोड़ते हैं तो इस का मूल्य ₹320,850 है! संस्था ने 2022 – 23 में समुदाय से संसाधन जुटाए ₹320,850 के सिर्फ स्वयंसेवियों की विभिन्न गतिविधियों में संचालन की भूमिका से!

- ★ 880 स्वयंसेवी 18 से 45 वर्ष के हैं व 147 स्वयंसेवी 46 से 60 वर्ष के हैं
- ★ 146 स्वयंसेवी व्यावहारिक रूप से शिक्षित हैं व 881 औपचारिक रूप से शिक्षित हैं
- ★ 181 स्वयंसेवियों का स्वरोज़गार है, 467 किसान हैं, 38 नौकरी में हैं, 299 विद्यार्थी हैं व 42 बेरोज़गार

- 1027 community volunteers, 553 women & 474 men, are regular in SCRIA facilitated initiatives
- In the reporting year 133 volunteers contributed 713 workdays in various initiatives
- Of this 61 women contributed 326 workdays and 72 men contributed 387 workdays
- This year workdays' contribution of 713 days amounts to ₹320,850 when calculated as per the statutory minimum wage. In 2022 -23, SCRIA mobilized resources from outreach community worth ₹320,850 just through volunteers working on various community based initiatives!

- ★ 880 of the volunteers are in the age group of 18 to 45 yrs., 147 in 46 to 60 yrs.
- ★ 146 of the volunteers are functionally literate while 881 are formally literate
- ★ 181 of the volunteers are self-employed, 467 farmers, 38 in service, 299 are students & 42 unemployed



SCRIA आभार के साथ 1027 स्वयंसेवियों का सहयोग स्वीकार करती है जिनके निस्वार्थ योगदान के बिना लक्ष्य तक पहुंचना संभव नहीं हैं SCRIA gratefully acknowledges the support of 1027 community volunteers without whose selfless devotion the mission would be incomplete

स्थानीय पहल Local Initiatives

कई वर्षों से SCRIA के कार्यक्षेत्र के गांवों में स्थानीय स्तर पर प्रजातान्त्रिक व विकासात्मक प्रक्रियाओं में जवाबदेही व सम्मिलन लाने के लिये नागरिकों द्वारा कार्यवाही आम है अपवाद नहीं। जीवन को प्रभावित करने वाली सामाजिक, राजनैतिक, आर्थिक और कानूनी प्रक्रियाओं में महिलाओं की भूमिका को मुख्यधारा में लाने के लिये व नागरिकों की सक्रिय भागीदारी को प्रोत्साहित करने के लिये इस प्रकार की कार्यवाही को प्रोत्साहित करते हैं। स्थानीय पहल करते हैं चर्चा, सामुदायिक बैठकों, निर्णायकों को शिकायत, जन प्रदर्शन, रैली, प्रशासन को ज्ञापन, श्रमदान, प्रेस कान्फ्रेंस इत्यादि द्वारा। स्थानीय पहल होते हैं

- जन स्कीमों व कार्यक्रमों के प्रतिपादन और सेवाओं को प्रदान करने में सुधार के लिये
 - जन कार्यों, विकासात्मक व शासन की प्रक्रियाओं में जवाबदेही के लिये
 - गांव स्तरीय विकासात्मक पहलों व जन सेवाओं में लिंग संवेदनशीलता और लिंग आधारित भेदभाव व हिंसा का आंकलन व समीक्षा करने के लिये
- इन पहलों में SCRIA की भूमिका सीमित होती है उचित जानकारी प्रदान करने में, सम्बन्धित संस्थाओं के साथ सम्पर्क कराने में और कानून की अनुपालना को प्रोत्साहित करने में। इस रिपोर्ट के वर्ष में पहुंच के 877 गांवों में स्थानीय पहलों की गई जिनका विवरण नीचे दिया है।

For many years now citizens' action for accountability & inclusiveness in democratic & developmental processes at local level in SCRIA's outreach villages are the norm rather than exception. This is encouraged for mainstreaming the role of women and for encouraging citizens' to actively participate in social, political, economic & legal processes affecting their lives. Local initiatives are in the form of community meetings, complaints to "decision makers", negotiations, public demonstrations, rallies for support from general public, memorandum to administration, voluntary labour, press conference and protest march for -

- improvement in delivery of public schemes, programs & services
 - increased accountability in public works, development & governance processes
 - negotiation for & monitoring of gender sensitivity in village level development initiatives and public services along with gender based discrimination & violence
- SCRIA's role in all this is limited to providing appropriate information, networking with appropriate bodies and in promoting respect for law in word and spirit.

In the reporting year initiatives were undertaken in 877 outreach villages the details of which are given below -

• कुल स्थानीय पहल Total local initiatives	3672
• पहलें जिनका समाधान हुआ No. of initiatives resolved	3280
• पहलें जो चालू हैं No. of initiatives ongoing	392
• पहलों के प्रकार Type of initiatives	9
• पहलों में भागीदार महिलाएँ No. of women involved in initiatives	17734
• पहलों में भागीदार पुरुष No. of men involved in initiatives	16292
• पहलों में भागीदार मंच सदस्य No. of Manch Sahyogi involved	4757
• पहलों में भागीदार पंचायत सदस्य No. of Panchayat members involved	2208
• पहलों में भागीदार लोककर्म No. of public officials involved	1595
• पहलों में कुल कार्य दिवस लगे No. of workdays spent	9365

परिवर्तन दूत Change makers

किसी भी स्थिति में किसी भी जगह पर कोई भी व्यक्ति परिवर्तन निर्माता, परिवर्तक हो सकता है। परिवर्तन दूत होने के लिये चाहिये केवल दृष्टि, पहल, संयम, दृढ़ता, साहस व विश्वास। रूढ़ीवादी समाज में परिवर्तन केवल कठिन ही नहीं अपितु जोखिम वाला कार्य भी होता है। हमारे कार्यक्षेत्र के लोग मुख्यतः महिलाएँ इन कठनाईयों से विचलित हुये बिना परिवर्तन ला रही हैं अनेक प्रकार की पहलों के द्वारा जैसे व्याप्त लिंग भेदभाव व हिंसा के विरुद्ध कार्यवाही करना, हिंसा पीड़िता को सहायता देना, सामाजिक राजनैतिक व विकासात्मक प्रक्रियाओं में सम्मिलन सुनिश्चित करना, लोक सेवाओं स्कीमों में जवाबदेही व प्रतिक्रियाशीलता मांगना, ज़रूरतमंद को जायज़ हक व अधिकार दिलवाना, गांव स्तरीय विकास व निगरानी समितियों को सक्रिय कर क्रियाशील करना, जन संस्थानों की अर्थपूर्ण कार्यशीलता सुनिश्चित करना और सार्वजनिक संसाधनों का जन प्रबन्धन प्रोत्साहित करना।

Any person can be a change maker, a transformer in any situation in any place. It only requires vision, initiative, patience, persistence, courage and faith to be a transforming agent. Change in a rigid society is not only difficult but at times a dangerous exercise. But undeterred, people, mainly women, in our outreach villages go about creating ripples of change by acting against pervasive gender discrimination & violence, providing support to women victims of violence, securing inclusiveness in social political & development processes, seeking accountability & responsiveness in public services & schemes, facilitating due benefits for needy, activating public forums like development & supervision committees, ensuring inclusiveness in local governance & development processes, working for meaningful functioning of public institutions and for public management of community assets & common resources.

Pushpa Kanwar of village Kheewansar in Churu - Rajasthan, has decided to stop and end violence against women & children in her village. One day she came to know about a woman in her village who was being abused daily by her alcoholic husband and no one in the neighbourhood was willing to intervene. Pushpa, as per the protocol to help abuse victims provided by SCRIA, contacted the victim who shared her story of unending abuse and pleaded for help. Pushpa with other like-minded women contacted Anganwadi worker Maina, a primary protection officer in case of gender violence. Pushpa, Maina & others tried to talk some sense into victim's husband first but the victim's husband told them to get lost and he would treat his wife as he wishes to. Enraged Pushpa, Maina & others went to Crisis Centre and took victim with them. At the Centre the officials summoned victim's husband and had long discussion with him. He was categorically told that if he did not stop abusing his wife he would be arrested and legal action would follow. Victim's husband pleaded for mercy and promised not to beat his wife again. Crisis Centre asked Pushpa to periodically check on victim to ensure that her errant husband kept his word and did not abuse her. Pushpa has ensured that and for several months now the victim has been living an abuse free life. There are many dozen "Pushpa's" in villages of outreach who are selflessly working to stop and end violence against women & children in their respective villages.

Being a change maker for women is not easy in a society deeply rooted in patriarchal values. Sanjita of Naya Gaon in Rewari – Haryana, found out that narcotics & other intoxicants were being sold illegally in her village especially to teens. She shared this with her fellow group members and they all decided to take action against it. Some men from the village also joined them and together they confronted the people involved in illicit trade, these people were threatened with legal action & social boycott if they did not stop their nefarious activities immediately. Those involved first denied their involvement in the act but later accepted and apologized, they promised to stop peddling. Sanjita then started creating awareness in the village about substance abuse especially among the youth. She is helped by many women & men in the village in this endeavour.

In Balaal village of Churu - Rajasthan wastewater & garbage in all public places of the village were a major sanitation problem. No lane, street or open space was free of the two. During a Chaupal meet Dula Ram raised the issue and asked Panchayat to initiate action for cleaning up the village. The Sarpanch called a meeting in which it was decided to form a committee of 7 members headed by Dula Ram who would plan to rid the village of wastewater & garbage. The committee decided that every house will have a soak pit for house hold wastewater and garbage has to be disposed of in designated places only and anyone found violating the two rules will be fined ₹500 per offence. A two-day cleaning campaign was also organized in which volunteers from every household participated to clean the village. Dula Ram was felicitated by his fellow village residents for taking lead in this exemplary initiative.

Sonu of Saharanwas in Rewari, Pramila of Haluheda in Rewari, Rinku of Kosli in Nahar, Gopaldas of Ranwa in Churu, Pooja of Chang in Rewari, Manti of Geeradhpur in Jhajjar, Babita of Tumbahedi in Jhajjar, Jinku of Kolasar Churu, Neetu of Khushpura, Manju of Khaliyan, Neelam of Hansawas, Rajrani of Thana and others are actively taking steps to promote gender equality, stop gender violence, promote safe spaces for women & girls, promote inclusiveness & accountability in local governance and development initiatives, encourage cleanliness & sanitation, access to public programs of social security, etc. in their villages. Those mentioned in this report are not the only change makers in our midst. There are several thousand women & men who are bringing about change in their & others' lives through various initiatives. Sometimes the initiatives are very small benefitting a family or two and other times the effect of the initiative goes beyond few villages. But all initiatives bring about a change for the better, motivating the change makers to keep bringing change.



Publications

Following were published in the year for sensitization, opinion building & dissemination of information-

- Handbills in Hindi – 3 types were published based on matter prepared in previous years and were on issues related to equity based gender equality, safe spaces for women & girls and planning for village development
- Banners in Hindi – 3 types were printed on issues related to gender equality, safe spaces for women & girls and on ending violence against women & girls
- Booklets in Hindi – 2 types for capacity building of Sakriya Shakti & Sakriya Manch Sahyogi
- SCRIA's annual report for 2021 - 2022
- Audio Messages in Haryanvi & Marwari on issues related to safe spaces for women & girls in public areas
- Wall writing – Slogans promoting gender equality and on ending violence against women & girls

Supportive Services

At SCRIA the two main supportive services, accounts & administration, constantly endeavour to provide proficient service ensuring transparency and accountability in their work. Finance management takes into account the accepted national - international standards of accounts & finance management, the upkeep of inventory, stock & assets. It rigorously follows digital payments and cash payments are nearly negligible now. Furthermore, in the reporting year SCRIA continued in its pursuit of making its campuses green. SCRIA, for its use now generates 22.0 kwp of solar power daily, harvests 4,54,500 litres of rainwater annually, composts 40,500 kilogram of bio waste, nurtures 1,512 trees & plants of 72 different varieties, runs an ecological farm in 1.5 acres and manages livestock for chemical free milk & milk products. SCRIA has an internal complaints' committee ICC, against sexual harassment at workplace as per the Act and its headed by Ms. Rekha.



Balance Sheet as on 31st March, 2023

LIABILITIES	Schedule	AMOUNT	ASSETS	Schedule	AMOUNT
Capital Fund		97,37,259.37	Fixed Assets	A	97,37,259.37
Corpus Fund	C	3,46,92,361.00	Investment – Scheduled Bank FDRs		3,29,75,000.00
Staff Social Security Fund		7,23,680.28	Loans & Advances	D	4,97,254.00
Payables		4,48,611.00	Security - Telephone & LPG		7,053.00
Committed Grant Fund	B	56,506.45	Receivables		59,570.00
			T.D.S. Refundable A.Y 2010-11		5,380.00
			T.D.S. Refundable A.Y 2022-23		1,77,518.40
			T.D.S. Refundable A.Y 2023-24		1,75,216.00
			Cash & Bank Balance		19,49,941.84
			Cash in Hand	27,993.00	
			Cash at Bank	<u>19,21,948.84</u>	
			Income & Expenditure A/c		
			Opening Balance as on 01.04.2022	(5,99,877.00)	
			Add: Excess of Expenditure over Income during the year	<u>6,74,102.49</u>	74,225.49
TOTAL		4,56,58,418.10			4,56,58,418.10

Signed as per our separate audit report of even date attached herewith

Sunil
Team Leader Accounts
Place: Khorl
Date : 04.09.2023

UDIN: 23096728BGWTOP6034



M/SPANKAJ MAN SINGH & CO.
Chartered Accountants FRN:016118N

Pankaj Sharma

Pankaj Sharma, FCA, DISA (ICAI)
Partner, Membership No. 096728

[Signature]

Executive Director



Income & Expenditure Account for the year ended on March 31st, 2023

Expenditure	Schedule	Amount	Income	Schedule	Amount
Expenditure met from Purpose Specific Grant Fund – Foreign Source	B	52,04,214.07	Purpose Specific Grant Fund - Foreign Source	B	52,04,214.07
			Opening Committed Balance 01.04.2022		-3,74,356.48
Expenditure met from Purpose Specific Grant Fund– Government Source		-	Add: Received during the year		56,22,945.00
			Add: Bank Interest received during the year		12,132.00
Expenditure met from Purpose Specific Grant Fund– CSR Source		-	Less: Grant Fund Committed Balance as on 31.03.2023		<u>56,506.45</u>
Expenditure met from Interest Income Source	B - I	26,75,396.00	Purpose Specific Grant Fund – Government Source		-
Expenditure met from other Local Income Source	B - II	13,36,415.31	Purpose Specific Grant Fund – CSR Source		-
			Income from Interest Source	B – I	23,80,368.30
			Income from other Local Source	B - II	9,57,340.52
			Excess of Expenditure over Income		6,74,102.49
TOTAL		92,16,025.38			92,16,025.38

Sanil

Team Leader Accounts
Place: Khorl
Date : 04.09.2023
UDIN: 23096728BGWTOP6034



Signed as per our separate audit report of even date attached herewith
M/S PANKAJ MAN SINGH & CO.
Chartered Accountants FRN:016118N

Pankaj Sharma

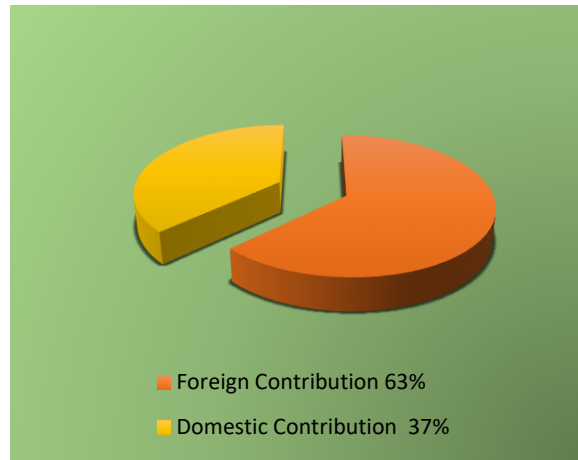
Pankaj Sharma, FCA, DISA (ICAI)
Partner, Membership No. 096728

Executive Director

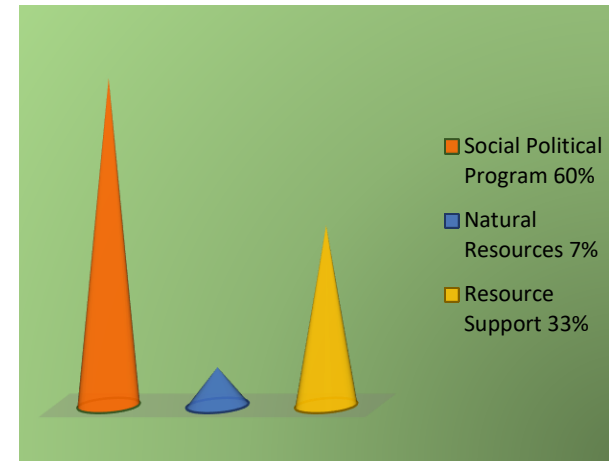
[Signature]



Resources Summary



Resources during 2022 - 23



Resource utilization in 2022 – 23



The Organization

Social Centre for Rural Initiative and Advancement [SCRIA] www.scria.org
Email scriakhori@yahoo.co.in

Registration Act

Indian Societies Registration Act of 1860/ Haryana Registration, Regulation of Societies Act 2012

Date of Registration 31. 07. 1992 – 11.04.2017

Registration No. 618 - 00975

Foundation Year June, 1979

Chief Functionary Sunder Lal, Executive Director

Operational Area Haryana & Rajasthan

Headquarter Khori 123101, District Rewari, Haryana

Main office Rajasthan Derajsar 331022, Ratangarh, District Churu, Rajasthan

Funding Sources Govt. of India, State Government, National & International Development Institutions, CSR from Corporates and Local Contributions

SCRIA's Team

Executive Director Sunder Lal

Team Leader Programs Bajrang Manda

Team Leader Accounts Sunil Kumar

Program Team Mohinder, Jaiparkash, Prem, Suman, Rekha, Ramu Ram, Manisha, Lalita

Administration Team Gopal, Phep, Ramkaran, Manoj, Laxmi, Narender, Krishan, Parmeshwari

Support of more than 1000 community volunteers during the year

Partners

★1027 volunteers in 1210 villages ★Asahi India ★Australian High Commission ★ British High Commission ★Canadian High Commission ★Canadian Hunger Foundation ★CAPART ★Canadian International Development Agency ★Department of Science & Technology ★District Rural Development Agency ★CTM - Italy ★Embassy of Federal Republic of Germany ★Embassy of Japan ★Embassy of Sweden ★European Union ★Friedrich Ebert Stiftung ★GTZ ★Habitat for Humanity International ★Helpage ★Indian Council for Agricultural Research ★Indo Global Social Service Society ★Industrial Development Bank of India ★Ministry of Environment & Forest ★MAHOU Foundation – Spain ★Ministry of Non Conventional Energy Sources ★Ministry of Panchayati Raj ★Ministry of Rural Development ★Misereor ★NABARD ★One Village - U.K. ★Oxfam - U.K. ★Rachna Club – Japan ★Rashtriya Mahila Kosh ★Rotary India Water Conservation Trust ★Royal Norwegian Embassy ★SIDBI ★Solidar' Monde ★Swedish International Development Agency ★UNDP ★Welthungerhilfe ★Youthreach

General Body Members

Ms. Bimla Devi, President – Village & P.O. Bas Duda, District Rewari , Haryana

Ms. Kailash Bai, Vice President – Village Kosli 123302, District Rewari , Haryana

Mr. Ram Chander Punia, Treasurer – 12 MC Colony, Charkhi Dadri, District Charkhi Dadri, Haryana

Prof. Ranbir Singh Yadav, Secretary – H. No.120, Sector 3, Rewari 123401, Haryana

Ms. Rekha, Associate Secretary – Village Rasuli 123401, District Rewari, Haryana

Ms. Lalita Yadav, Member –Village Gagadwas, P.O. Bawania, District Mahendergarh, Haryana

Ms. Kusum Lata, Member – Village Kalaka, P.O. Gurdas Majara, District Rewari, Haryana

Dr. Jyotsna Chatterji, Member – Apartment 201, Block 44, Heritage City, M.G. Road, Gurgaon - 122002, Haryana

Mr. Narendra Singh Rao, Member – D 26, Suncity Sector 7, Rewari 123401, Haryana

Mr. Romesh Bhattacharji, Member – D 1008, New Friends Colony, New Delhi 110065

Dr. Laj Pal Bharara, Member – 17/399 Chopasani Housing Board, Jodhpur, 342008, Rajasthan

Mr. Jagjit Singh, Member – Krishna Nagar, Col. Maha Singh Chowk, Rewari, Haryana

Governing Body Members

Ms. Bimla Devi, President – Village & P.O. Bas Duda, District Rewari , Haryana

Ms. Kailash Bai, Vice President – Village Kosli 123302, District Rewari , Haryana

Mr. Ram Chander Punia, Treasurer – 12 MC Colony, Charkhi Dadri, District Charkhi Dadri, Haryana

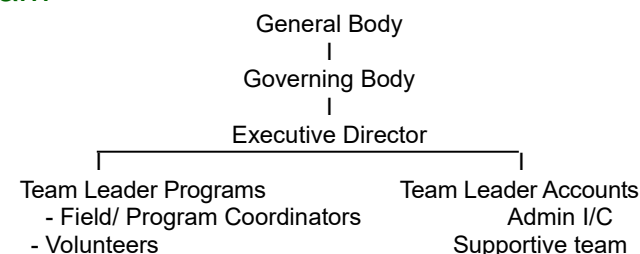
Prof. Ranbir Singh Yadav, Secretary – H. No.120, Sector 3, Rewari 123401, Haryana

Ms. Rekha, Associate Secretary – Village Rasuli 123401, District Rewari, Haryana

Dr. Jyotsna Chatterji, Member – Apartment 201, Block 44, Heritage City, M.G. Road, Gurgaon - 122002, Haryana

Ms. Lalita Yadav, Member –Village Gagadwas, P.O. Bawania, District Mahendergarh, Haryana

Organigram



SCRIA Actively Concentrates on

- mainstreaming gender equality & promoting gender perspective
- sensitizing on women's rights, entitlements & gender justice
- promoting a culture intolerant of gender violence
- organizing women for a meaningful partnership in development through political empowerment and participation in governance processes
- social empowerment of women & Gram Sabha members for social justice & local initiatives
- demystification & dissemination of information related to various issues, laws, legal processes & procedures and public schemes
- promotion of livelihood activities among low & marginal income families
- engaging teens & youth on social challenges
- rain harvesting, prudent water usage and ground water recharging
- soil conservation, vegetation promotion
- sustainable & organic dry land agricultural practices and livestock management
- environmental sanitation at household and community level



SOCIAL CENTRE FOR RURAL INITIATIVE & ADVANCEMENT

Head Quarter - Khori 123101, District Rewari, Haryana, India

Main Office Rajasthan – Derajsar 331022, Ratangarh, District Churu, Rajasthan, India

<http://www.scria.org> Email – scriakhori@yahoo.co.in

