



SCRIA

ANNUAL REPORT

2019 - 2020



विषय सूची Contents

SCRIA के बारे में	About SCRIA	3
हमारी पहलें		4
Our Initiatives		6
प्रभाव	Impact	8
स्वयंसेवी	Volunteers	9
स्थानीय पहल	Local Initiatives	10
परिवर्तन दूत	Change Makers	11
Publications		12
Supportive services		12
वित्तीय जानकारी	Financial Report	13
संस्थान	The Organization	15

रिपोर्ट का प्रकाशन Published by SCRIA, Khori 123101, District Rewari, Haryana

सितम्बर 2020 September 2020

ज़िम्मेदारी सुन्दर लाल — कार्यकारी निदेशक

Responsible Sunder Lal - Executive Director

रिपोर्ट लेखन व प्रारूप सेनू

Report written & designed by Senoo



SCRIA के बारे में About SCRIA

हमारी दृष्टि

ग्रामीण समुदाय द्वारा सत्त ग्रामीण विकास

Our Vision

Sustainable rural development by rural communities

हमारा लक्ष्य

विकास व शासन की प्रक्रियाओं में समुदाय की अर्थपूर्ण भागीदारी के लिये उनकी क्षमताओं का विकास करना

Our Mission

Building capacities of communities for meaningful participation in governance & development processes

पहुंच का क्षेत्र

1105 गांव जो दक्षिण हरियाणा के रेवाड़ी, महेन्द्रगढ़, झज्जर, दादरी व भिवानी जिलों और उत्तर राजस्थान के चुरु जिलों में हैं

Outreach Area

1105 villages in the districts of Rewari, Mahendergarh, Jhajjar, Dadri & Bhiwani in south Haryana and Churu in north Rajasthan

पहुंच के जन

सामाजिक व आर्थिक रूप से पिछड़े समुदाय, ग्राम सभा सदस्य, पंचायती राज संस्थाओं के प्रतिनिधि – खासतौर पर महिलाएँ व नागरिक

Outreach People

Economically & socially disadvantaged communities, members of Gram Sabha, representatives of Panchayati Raj Institutions - specially women, like minded civil society organizations and citizens'

केन्द्र बिन्दु है समुदाय के साथ कार्य करने पर जिससे वह प्रगति में सहयोगी हों। महिलाएँ, पुरुष, किशोर व युवा पहलों में भागीदार होते हैं जिससे प्रभाव लम्बे समय रहता है, लागत में हिस्सेदारी होती है, स्थानीय पहलें होती हैं और ग्राम स्तर पर प्रबन्धन क्षमताओं में बढ़ोतरी

Focus is on working with communities for a meaningful relationship as partners in progress. Women, men, teens & youth are involved in programs that leads to community ownership, cost sharing, self-reliance, grass root initiative and enhanced village level organizational capacities.



पहुंच के कार्यक्षेत्र के नागरिकों की ज़िन्दगी में गुणात्मक व संख्यात्मक सुधार के लिये SCRIA नागरिकों को एक मूक ग्रहणकर्ता की जगह शासन व विकास की प्रक्रियाओं में पहल कर प्रबन्धक बनाने के लिये प्रयासरत है। इसके लिये SCRIA महिला, पुरुषों, किशोर व युवाओं की क्षमताओं का विकास करती है जिससे वह अपनी समस्याओं को पहचानें व सुस्पष्ट करें, उसके निपटान का हल खोजें और स्थानीय पहलों के लिये संसाधन जुटाएँ। कार्यक्रमों के लागत में समुदाय की हिस्सेदारी,

स्वावलम्बिनी

दृष्टि

लिंग समानता को मुख्यधारा में लाना

लक्ष्य

- सामाजिक, राजनैतिक, आर्थिक व विकास की प्रक्रियाओं में अपने अधिकार, हक व न्याय लेने के लिये महिलाओं को सशक्तिकरण के अवसर देना
- लिंग समानता के लिये समर्थक वातावरण बनाना
- महिलाओं के मुद्दों व विचारों को समाज की मुख्यधारा में प्रोत्साहित करना

विकास के लिये पहलें

सक्रिय स्वावलम्बन महिला संगठनों व संघों की सदस्याओं और अन्य महिलाओं को महिलाओं के अधिकार, हक व लिंग न्याय के लिये संवेदनशील करना

सक्रिय समानता ग्राम सभा में लिंग समानता व लिंग परिपेक्ष से सम्बन्धित मुद्दों को प्रोत्साहन

शक्ति परिषद लिंग व घरेलू हिंसा, आदि से त्रस्त महिलाओं के लिये एक सहायता समूह

सक्रिय लिंग अंकेक्षण महिलाओं की स्थिति जानने के लिये दृष्टिकोण व व्यवहार का मानचित्रण

2019-20 में पहुंच व गतिविधियां

• सामान्य पहुंच के गांव	1,105
• सघन पहुंच के गांव	521
• सक्रिय शक्ति महिला नेत्रियां	579
• क्षमता वर्द्धन गतिविधियां	
. कार्यशाला/प्रशिक्षण	9
. किशोर व युवाओं से संवाद	258
. अभियान	6
• लिंग समानता सर्वे गांव	211
• महिला मुद्धा दिवस	4
• शक्ति परिषद की पहलें	139
• शक्ति कोष राशी	₹110,469

स्वशासन

दृष्टि

सम्मिलित व जवाबदेही शासन

लक्ष्य

शासन की निर्णय लेने वाली प्रक्रियाओं में महिलाओं व अन्य नागरिकों की अर्थपूर्ण भागीदारी

विकास के लिये पहलें

सक्रिय संघ स्थानीय पहल के लिये महिलाएँ संगठनों व संघ में संयोजित

सक्रिय मंच गांवों में विभिन्न महिला संगठनों का गांव स्तरीय मंच

सक्रिय प्रतिनिधि व पंचायत पंचायती राज व्यवस्था में निर्वाचित महिला प्रतिनिधि व अन्य सदस्य शासन व विकास की प्रक्रियाओं को सम्मिलित व जवाबदेही बनाने के लिये प्रयासरत

सचेत नागरिक सामरिक महत्व के मुद्दों में नागरिकों की समझ बनाना

सक्रिय सामाजिक अंकेक्षण व जन सुनवाई ग्राम सभा द्वारा गांव में विकासात्मक पहलों, सार्वजनिक सुविधाओं और सेवाओं का आंकलन व अवलोकन

2019-20 में पहुंच व गतिविधियां

• सामान्य पहुंच के गांव	725
• सघन पहुंच के गांव	401
• महिला संगठन गांव में	196
• क्षमता वर्द्धन गतिविधियां	
. कार्यशाला/प्रशिक्षण	14
. किशोर व युवाओं से संवाद	57
. अभियान	2
• सूचना कैम्प	90
• सक्रिय मंच	687
• सक्रिय मंच सहयोगी	4436
• सक्रिय पंचायत	42
• ग्राम स्तरीय कमेटियां सक्रिय की	1613
• संगठन व मंच द्वारा स्थानीय पहल	1953

सामाजिक अंकेक्षण व सहभागी प्रभाव आंकलन के द्वारा संस्था अपने कार्यकलापों में अधिक पारदर्शिता, निरंतरता व समुदायिक वचनबद्धता सुनिश्चित करती है। इसके अतिरिक्त समुदाय से स्वेच्छिक स्वयंसेवी निरंतर कार्यक्रमों में महत्वपूर्ण भूमिका निभाते हैं। राष्ट्रीय प्रयासों व क्षेत्र की समस्याओं के मद्देनजर SCRIA की मुख्य पहलें लिंग समानता, स्वशासन, आजीविका व प्राकृतिक सम्पदा के प्रबन्धन से सम्बन्धित हैं।

स्वजीविका

दृष्टि

आर्थिक सशक्तिकरण व सम्मिलन

लक्ष्य

महिलाओं व अन्यो को उद्यम व उद्यमिता के अवसर प्रदान करना

विकास के लिये पहलें

सक्रिय संचय सक्रिय संगठन के सदस्यों के लिये बचत व ऋण प्रक्रिया

सक्रिय उधमी महिलाओं के लिये सूक्ष्म उधम की पहल का अवसर

सक्रिय उधम सक्रिय संगठनों द्वारा सामूहिक व्यवसाय को प्रोत्साहन

सक्रिय शिक्षा ग्रामीण युवतियों व युवकों को उच्च शिक्षा व तकनीकी प्रशिक्षण प्राप्त करने के लिये सहयोग और आमजन को आर्थिक व वित्तीय मुद्दों पर संवेदनशील करना

2019-20 में पहुंच व गतिविधियां

• पहुंच के गांव	196
• महिला संगठन	196
• सदस्याएँ	2,275
• संगठनों के पास बचत	₹ 2,08,48,106



सम्पदा प्राकृतिक

दृष्टि

प्राकृतिक संसाधनों का प्रभावी व सतत प्रबंधन

लक्ष्य

जल, मिट्टी, वनस्पति, चारा व ईंधन के प्रभावी प्रबन्धन के लिये ग्राम समुदाय का सशक्तिकरण

विकास के लिये पहलें

सक्रिय जल सम्पदा बरसाती जल संग्रहण तंत्र, भूजल पुनर्भरण, उचित प्रबन्धन व उपयोग

सक्रिय स्वच्छता घरों व समुदाय स्तर पर बेहतर स्वच्छता के लिये ग्राम समुदाय को संवेदनशील बनाना और उन्हें शौचालय, सोखता गड्ढा व कम्पोस्ट निर्माण के लिये तकनीकी व आर्थिक सहायता प्रदान करना

सक्रिय कृषक किसानों व पशुपालकों के लिये शुष्क खेती के तरीके व पशुपालन प्रबंधन के गुर समझने व अपनाने का अवसर

सक्रिय सामलात सम्पदा सामलात भूमि व संसाधनों का सम्बंधित समुदाय द्वारा सतत प्रयोग द्वारा सतत प्रबंधन

2019-20 में पहुंच व गतिविधियां

• सामान्य पहुंच के गांव	725
• सघन पहुंच के गांव	401
• क्षमता वर्द्धन गतिविधियां	
• कार्यशाला/प्रशिक्षण	1
• अभियान	2
• किशोर व युवाओं से संवाद	229
• तलई	20
• बरसाती जल संग्रह टांका	200
• कणाबन्दी हैक्टेयर	300
• चौकाबन्दी हैक्टेयर	60
• उन्नत खेती हैक्टेयर	100
• प्राकृतिक खेती परिवार	337
• जैविक कम्पोस्ट	120
• गन्दे पानी का प्रबन्धन — गांव	120

Our Initiatives

For bringing qualitative & quantitative improvement in the lives of citizens' in its outreach region SCRIA works towards transforming them from being passive recipients to initiators and managers of governance & development processes. For this purpose SCRIA facilitates capacity building of women, men, youth & teenagers to identify & articulate their own problems, find ways to tackle them, generate - mobilize resources for initiating & implementing local initiatives.

Swavlambini Self reliant

Vision

Mainstreaming gender equality

Mission

- Empowerment opportunities to women to seek their rights, entitlement & justice in social, political, economic and developmental processes
- Facilitate an enabling environment for gender equality
- Promote mainstreaming of women's issues

Development initiatives

Sakriya Swavlamban

Sensitizing women on women's rights, entitlements & gender justice

Sakriya Samaanta

Promotion of issues of gender equality & gender perspective among Gram Sabha members'

Shakti Parishad

Support group for victims of gender & domestic violence, social intolerance, etc.

Sakriya Gender Audit

Mapping gender attitudes & practices to ascertain the status of women in family & society

Outreach & events facilitated in 2019 - 20

• General outreach villages	1105
• Intensive outreach villages	521
• Sakriya Shakti [women leaders]	579
• Capacity building activities	
- workshops/ trainings	9
- dialogues with teens & youth	258
- campaigns	6
• Gender Audit – villages	211
• Mahila Mudha diwas	4
• Initiatives by Shakti Parishad	139
• Shakti Kosh amount	₹110,469

Svashaasan Self governance

Vision

Inclusive and accountable governance

Mission

Meaningful participation of women & other citizens' in decision making processes of governance

Development initiatives

Sakriya Sangh

Women organizing themselves into groups & federation for local initiatives

Sakriya Manch

An intra village network of various women groups

Sakriya Pratinidhi

Elected women & other representatives of Panchayati Raj Institutions making governance & development inclusive & accountable

Sachet Naagrik

- Sensitizing citizens' on issues of critical importance
- Gram Sabha members monitoring & reviewing the status of development initiatives, public facilities & services in their villages

Outreach & events facilitated in 2019 - 20

• General outreach villages	725
• Intensive outreach villages	401
• Sangathans' in villages	196
• Capacity building activities	
- workshops/ trainings	14
- dialogues with teens & youth	57
- campaigns	2
• Information Camps	90
• Sakriya Manch	687
• Sakriya Manch Sahyogi	4436
• Sakriya Panchayats	42
• Village level Committees activated	1613
• Local Initiatives by groups/ Manch	1953

Sustainability, community's ownership, accountability and probity in initiatives' is further fortified by cost sharing, annual social audit of SCRIA's programs, participatory impact monitoring & involvement of voluntary community volunteers. In concurrence with the national policies and problems of the region SCRIA has organized its' work around key initiatives of gender equality, governance, livelihood & natural resources management known as Swavlambini, Svashaasan, Svajeevika & Sampada Prakritik respectively.

Svajeevika Self livelihood

Vision

Economic empowerment and inclusion of women & others

Mission

Provide opportunity to women & others for micro enterprise & entrepreneurship

Development initiatives

Sakriya Sunchay

A saving & credit activity for members of Sakriya Sangathans

Sakriya Udyami

An opportunity for women entrepreneurs to start micro enterprise

Sakriya Shiksha

A financial opportunity for young women & men interested in attaining technical or higher education and sensitization of people on financial & economic issues

Outreach & events facilitated in 2019 - 20

• Outreach villages	196
• Sangathans	196
• Members	2,275
• Savings w/ groups	₹ 2,08,48,106



Sampada Prakritik Natural Resources

Vision

Effective and sustainable natural resource management

Mission

Empowerment of village communities for efficient management of water, soil, vegetation, fodder & fuel

Development initiatives

Sakriya Jal Sampada

Promote rain harvesting systems, ground water recharging & prudent management

Sakriya Svachta

For improved sanitation at household & community level

Sakriya Krishak

An opportunity for farmers and livestock holders to learn & adopt improved dry land agricultural practices & livestock management

Sakriya Samlaat Sampada

Sustainable management & use of common lands and natural resources' assets

Outreach & events facilitated in 2019 - 20

• General outreach villages	725
- Intensive outreach villages	401
• Capacity building activities	
- workshops/ trainings	1
- campaigns	2
- dialogs with teens & youth	229
• Talai ponds	20
• Tankas Rain water harvesting tanks	200
• Kanabundi Slope bunding [hac.]	300
• Chowkabundi pasture bunding [hac.]	60
• Improved cultivation, bunding [hac.]	100
• Natural farming [families]	337
• Organic composting	120
• Waste water management [villages]	120

वांछित परिवर्तन को जानने के लिये व विकासात्मक प्रक्रियाओं से उत्पन्न प्रभावों व बदलावों पर समीक्षात्मक रूप से मंथन करने के लिये SCRIA ने अपने कार्यक्रमों के लिये सहभागी प्रभाव आकलन को नियमित वार्षिक घटक बनाया है। इसके लिये प्रभाव, सूचक, जानकारी एकत्र करने की पद्धति व विश्लेषण प्रक्रिया स्थापित की है।

प्रभाव आकलन संस्था द्वारा संगठित महिला संगठनों/ मंचों के साथ मिलकर किया जाता है। पहुंच के समुदायों में SCRIA द्वारा संचालित पहलों के प्रभाव को कुछ सूचकों के साथ नीचे दर्शाया है।

To monitor the ultimate desired change and for critical reflection on the effects and changes caused by development interventions SCRIA has made participatory impact monitoring a regular annual feature for its programs. For this purpose impacts, indicators, tools for data collection and analysis have been established.

Impact monitoring is done with the active involvement of women groups/ Manch facilitated by the organization. Given below are some impacts along with indicators indicating the extent to which initiatives facilitated by SCRIA have had an impact on outreach communities.

1 **Impact** Increased awareness among people regarding gender inequality due to visible & hidden discrimination

Indicators	2019
% of villages where at least 10 women & 20 men are adopting steps to promote gender equality	27
% of villages where Panchayat took steps for promoting gender equality in village	86.6
% of villages where at least 6 local initiatives were undertaken for reducing gender discrimination	8.87
no. of men involved per local initiative for reducing gender discrimination	11.2

2 **Impact** Increased efforts for checking visible and hidden violence against women

Indicators [average for per village]	2019
% of villages where at least 5 local initiatives were undertaken for ending VAW/G	7.26
no. of men involved per local initiative for ending VAW/G	8.43
% of village schools where committees for addressing sexual harassment have been activated	67
% of villages where social & institutional processes are activated to support victims of VAW/G	90.33
% of villages where community & Panchayat provided support to women victims	47
no. of Khap panchayats taking initiatives against gender violence	1

3 **Impact** Increased participation of women in governance & development processes

Indicators	2019
% of villages where 4 development committees are active with at least 40% women members	42.34
% of villages where at least 70% women PRI members were involved in village planning processes	84
% villages where at least 30% women were involved in planning & implementation of development processes	93

4 **Impact** Increase in social, political and development initiatives at village level

Indicators	2019
% of villages where at least 5 initiatives were undertaken on social, political & development issues	50.45
% of villages where at least 4 initiatives were undertaken for improving public services & resources	63.11

5 **Impact** Increased awareness among people on sustainable management of natural resources

Indicators	2019
% of villages involved in initiatives for sustainable revival & management of natural resources	75.47
% of villages where initiatives for cleanliness and waste management were undertaken	100
% of villages where committees for sustainable management of natural resources are active that have at least 30% women members	36

स्वयंसेवी Volunteers

SCRIA की विभिन्न पहलों में सफलता का राज है स्वयंसेवी – पहुंच के क्षेत्र से वो किशोर, युवा, महिलाएं व पुरुष जो स्वेच्छा से अभियान, चेतनाशील कार्यक्रम, सामूहिक सिफारिश, हिंसा पीड़ित महिला को सहयोग, सामूहिक संपत्ति विकास व सामुदायिक पहलों जैसे शासन व विकास की प्रक्रियाओं को सम्मिलित व जवाबदेही और जन सेवाओं व कार्यक्रमों को प्रभावी बनाने में साझेदार होते हैं।

- नियमित योगदान देने वाले 6529 स्वयंसेवी हैं
- रिपोर्ट वाले कार्य वर्ष में 286 स्वयंसेवियों ने 2101 कार्य दिवस का योगदान दिया
- जिसमें 54 महिलाओं का योगदान 647 कार्य दिवस था और 232 पुरुषों का 1454 कार्य दिवस
- इस योगदान को जब न्यूनतम मजदूरी से जोड़ते हैं तो इस का मूल्य ₹777,950 है! संस्था ने 2019 – 20 में समुदाय से संसाधन जुटाए ₹777,950 के सिर्फ स्वयंसेवियों की विभिन्न गतिविधियों में संचालन की भूमिका से!
- इस वर्ष स्वयंसेवियों के लिये 2 प्रशिक्षण आयोजित किये

स्वयंसेवियों की विशिष्टता

- ★ 88% स्वयंसेवी 18 से 45 वर्ष के हैं व 12% 46 से 60 वर्ष के हैं
- ★ 60% स्वयंसेवी व्यावहारिक रूप से शिक्षित हैं व 40% औपचारिक रूप से शिक्षित हैं
- ★ 21% स्वयंसेवियों का स्वरोजगार है, 31% किसान हैं, 42% विद्यार्थी हैं व 6% बेरोजगार

A significant share of success in SCRIA's various initiatives is due to its outreach constituents, children - youth - women - men, who willingly partner as volunteers with SCRIA in community initiatives like campaigns, community sensitization & motivation, collective advocacy, support to women victims of violence, community asset development and in local initiatives for inclusiveness & accountability in governance & developmental processes and for making public services functional.

- 6529 community volunteers, both women & men, are regularly active in SCRIA facilitated initiatives
- In the reporting year 286 volunteers contributed 2101 workdays in various initiatives
- Of this 54 women contributed 647 workdays and 232 men contributed 1454 workdays
- This year workdays' contribution of 2101 days amounts to ₹777,950 when calculated as per the statutory minimum wage. In 2019 -20, SCRIA mobilized resources from outreach community worth ₹777,950 just through volunteers working on various community based initiatives!

Volunteers' profile

- ★ 88% of the volunteers are in the age group of 18 to 45 yrs., 12% in 46 to 60 yrs.
- ★ 60% of the volunteers are functionally literate while 40% are formally literate
- ★ 21% of the volunteers are self-employed, 31% farmers, 42% are students & 6% unemployed

SCRIA आभार के साथ 6,529 स्वयंसेवियों का सहयोग स्वीकार करती है जिनके निस्वार्थ योगदान के बिना लक्ष्य तक पहुंचना संभव नहीं है

SCRIA gratefully acknowledges the support of 6,529 community volunteers without whose selfless devotion the mission would be incomplete



स्थानीय पहल Local Initiatives

कई वर्षों से SCRIA के कार्यक्षेत्र के गांवों में स्थानीय स्तर पर प्रजातान्त्रिक व विकासात्मक प्रक्रियाओं में जवाबदेही व सम्मिलन लाने के लिये नागरिकों द्वारा कार्यवाही आम है अपवाद नहीं। इस प्रकार की कार्यवाही को प्रोत्साहित किया जाता है जीवन को प्रभावित करने वाली सामाजिक, राजनैतिक, आर्थिक और कानूनी प्रक्रियाओं में महिलाओं की भूमिका को मुख्यधारा में लाने के लिये व नागरिकों की सक्रिय भागीदारी को प्रोत्साहित करने के लिये। यह स्थानीय पहल होते हैं चर्चा, सामुदायिक बैठकों, निर्णायकों को शिकायत, बातचीत, जन प्रदर्शन, रैली, प्रशासन को ज्ञापन, श्रमदान, प्रेस कान्फ्रेंस इत्यादि द्वारा। स्थानीय पहल होते हैं

- जन स्कीमों व कार्यक्रमों के प्रतिपादन और सेवाओं को प्रदान करने में सुधार के लिये
- जन कार्य, विकासात्मक व शासन की प्रक्रियाओं में जवाबदेही के लिये
- गांव स्तरीय विकासात्मक पहलों व जन सेवाओं में लिंग संवेदनशीलता और लिंग आधारित भेदभाव व हिंसा का आंकलन व समीक्षा करने के लिये

इन पहलों में SCRIA की भूमिका सीमित होती है उचित जानकारी प्रदान करने में, सम्बन्धित संस्थाओं के साथ सम्पर्क कराने में और कानून की अनुपालना को प्रोत्साहित करने में। इस रिपोर्ट के वर्ष में पहुंच के 673 गांव में स्थानीय पहलों की गई जिनका विवरण नीचे दिया है।

For many years now citizens' action for accountability & inclusiveness in democratic & developmental processes at local level in SCRIA's outreach villages are the norm rather than exception. This is encouraged for mainstreaming the role of women and for encouraging citizens' to actively participate in social, political, economic & legal processes affecting their lives. Local initiatives are in the form of discussions, community meetings, complaints to "decision makers", negotiations, public demonstrations, rallies for support from general public, memorandum to administration, voluntary labour, press conference and protest march. They are for

- improvement in delivery of public schemes, programs & services
- increased accountability in public works, development & governance processes
- negotiation for & monitoring of gender sensitivity in village level development initiatives and public services along with gender based discrimination & violence

SCRIA's role in all this is limited to providing appropriate information, networking with appropriate bodies and in promoting respect for law in word and spirit. In the reporting year initiatives were undertaken in 673 outreach villages the details of which are given below -

• कुल स्थानीय पहल Total local initiatives	1953
• पहलें जिनका समाधान हुआ No. of initiatives resolved	1614
• पहलें जो चालू हैं No. of initiatives ongoing	320
• पहलों के प्रकार Type of initiatives	9
• पहलों में भागीदार महिलाएं No. of women involved in initiatives	11799
• पहलों में भागीदार पुरुष No. of men involved in initiatives	7023
• पहलों में भागीदार मंच सदस्य No. of Manch members involved	3805
• पहलों में कुल कार्य दिवस लगे No. of workdays spent	5528



परिवर्तन दूत Change makers

किसी भी स्थिति में किसी भी जगह पर कोई भी व्यक्ति परिवर्तन निर्माता, परिवर्तक हो सकता है। परिवर्तन दूत होने के लिये चाहिये केवल दृष्टि, पहल, संयम, दृढ़ता, साहस व विश्वास। रूढ़ीवादी समाज में परिवर्तन केवल कठिन ही नहीं अपितु जोखिम वाला कार्य भी होता है। हमारे कार्यक्षेत्र के लोग मुख्यतः महिलाएँ इन कठनाइयों से विचलित हुये बिना परिवर्तन ला रही हैं अनेक प्रकार की पहलों के द्वारा जैसे व्याप्त लिंग भेदभाव व हिंसा के विरुद्ध कार्यवाही करना, हिंसा पीड़िता को सहायता देना, सामाजिक राजनैतिक व विकासात्मक प्रक्रियाओं में सम्मिलन सुनिश्चित करना, लोक सेवाओं स्कीमों में जवाबदेही व प्रतिक्रियाशीलता मांगना, ज़रूरतमंद को जायज़ हक व अधिकार दिलवाना, गांव स्तरीय विकास व निगरानी समितियों को सक्रिय कर क्रियाशील करना, जन संस्थानों की अर्थपूर्ण कार्यशीलता सुनिश्चित करना और सार्वजनिक संसाधनों का जन प्रबन्धन प्रोत्साहित करना।

Any person can be a change maker, a transformer in any situation in any place. It only requires vision, initiative, patience, persistence, courage and faith to be a transforming agent. Change in a rigid society is not only difficult but at times a dangerous exercise. But undeterred, people, mainly women, in our outreach villages go about creating ripples of change by acting against pervasive gender discrimination & violence, providing support to women victims of violence, securing inclusiveness in social political & development processes, seeking accountability & responsiveness in public services & schemes, facilitating due benefits for needy, activating public forums like development & supervision committees, ensuring inclusiveness in local governance & development processes, working for meaningful functioning of public institutions and for public management of community assets & common resources.

Bhawani of village Jaitasar, district Churu, is a 20 year old college going youth. He helps his family in their small farm and at times works as a wage labourer too. In early 2018 during a SCRIA facilitated campaign he took information material that was being given, read it, asked several questions from team and told them that he too wanted to volunteer in organization's initiatives. Since then Bhawani has been an active volunteer, in the reporting year he contributed 45 workdays in various campaigns, information camps, school dialogs and gender equality survey. Over the past 2 years, he has developed a good understanding of various issues, public programs & processes and acts that affect most in villages. Bhawani has been organizing youth in his village for community initiatives, is actively helping needy families to access various public programs and entitlements, raising voice against corruption in welfare and development initiatives and is actively promoting gender equality. Most families in his village now look up to him for solutions to varied problems, he has transformed into a change maker.

Dinesh of village Bachrara & Gautam of Ranasar Bikan, in district Churu, Neelam of Dharoli & Balbir of Dhanirwas in district Jhajjar, Rajender of Khorli & Suman of Pawti in district Rewari too are among those who are change makers bringing about change for the better in their communities & villages. Kailash & Gayatri of village Bhichri in Churu, Manch members of Ramgarh in district Rewari have changed the sanitation scenario of their respective villages by first highlighting the problem, then organizing people on the issue & then initiating steps to overcome it. Bina of Behrampur & Manch of Mundhra coaxed fellow village residents to come together & collectively solve years long problem of drinking water supply & storage. It wasn't an easy task but undeterred they did the needful.



Sharmila of Ahrod, Chota of Khanpur Khurd, Urmila of Shadipur, Suman & Santosh of Mainasar, Suman Kunwar of Dewari have been tirelessly working to stop & end VAW/G in their villages and for providing relief to victim. Similarly, Sakriya Manch members of village Mangleshwar, Prem of Kishanpur, Rajbala of Mundi, Saroj of Balawaas Jamapur, Rajni of Chandol, Sakriya Manch members of Amauli, Lila of Mitasar, Manju of Chariyan, Kiran of Jaitasar have taken exemplary initiatives to ensure timely distribution of ration, removal of liquor vends from main areas in village, timely facilitation of Gram Sabha meetings, proper mid-day meals are provided to children in school, responsiveness in public services, etc..

Jayna of Sarsar village in Churu was so fed up with unresponsive Panchayat that she contested in elections for Sarpanch with a clear program of what she will do. She won against all odds and is now working to fulfil her promises.

Those mentioned in this report are not the only change makers in our midst. There are several thousand women & men who are bringing about change in their & others' lives through various initiatives. Sometimes the initiatives are very small benefitting a family or two and other times the effect of the initiative goes beyond few villages. But all initiatives bring about a change for the better, motivating the change makers to keep bringing change.

Publications

Following were published in the year for sensitization, opinion building & dissemination of information-

- Booklets in Hindi 1 - on public schemes for the women & children in Rajasthan
- Handbills in Hindi 9 – sensitizing teens & youth on leadership, water sanitation and equity based gender equality; environment friendly life style, Sakriya Manch, gender equal society, sensitizing men & youth for ending violence against women, mapping of gender based practices and behaviour and on various village committees
- Newsletter in Hindi - Svashaasan [governance] published quarterly
- SCRIA's annual report for 2018 - 2019
- 5 Audio Messages in Haryanvi & Marwari on issues related to ending gender based violence & discrimination, water sanitation, equity based gender equality, mapping of gender based practices and behaviour and on various village committees

Supportive Services

At SCRIA the two main supportive services, accounts & administration, constantly endeavour to provide proficient service ensuring transparency and accountability in their work. Finance management takes into account the accepted national - international standards of accounts & finance management, the upkeep of inventory, stock & assets. It rigorously follows digital payments and cash payments are nearly negligible now. Furthermore, in the reporting year SCRIA continued in its pursuit of making its campuses green. SCRIA, for its use now generates 15.9 kwp of solar power daily, harvests 4,54,500 litres of rainwater annually, recharges 23,25,300 litres of groundwater annually, composts 40,500 kilogram of bio waste, nurtures 1,512 trees & plants of 72 different varieties, runs an ecological farm in 1.5 acres and manages livestock for chemical free milk & milk products. To fulfil its obligation towards public accountability, SCRIA made available online its annual report along with financial statements & has nominated its Head Administration as Public Information Associate for queries under Right to Information Act. SCRIA also has an internal complaints' committee ICC, against sexual harassment at workplace as per the Act and its headed by Ms. Rekha.



Balance Sheet as on 31st March, 2020

LIABILITIES	Schedule	AMOUNT	ASSETS	Schedule	AMOUNT
CAPITAL FUND		92,94,376.37	FIXED ASSETS	A	92,94,376.37
Purpose Specific Revolving Funds	C	3,47,64,801.00	Opening Balance as on 01.04.2019		92,96,201.99
Purpose specific grant funds committed	B	60,354.92	Add: Addition during the year		4,53,970.00
Staff Social Security Fund		4,40,621.62	Less: Disposal /damage during the year		4,55,795.62
Payables		4,22,816.00	Investment – Scheduled Bank FDRs		3,39,68,000.00
Income & Expenditure A/c		63,523.78	Loans & Advances	D	6,04,560.00
Opening Balance as on 01.04.2019		53,263.47	Security - Telephone & LPG		7,053.00
Add : Excess of income over expenditure during the year		10,260.31	Receivables		50,271.00
			T.D.S. Refundable A.Y 2019-20		2,27,008.00
			T.D.S. Refundable A.Y 2020-21		2,40,720.00
			Cash & Bank Balance		6,54,505.32
			Cash in Hand		15,841.00
			Cash at Bank		6,38,664.32
TOTAL		4,50,46,493.69			4,50,46,493.69

Signed as per our separate audit report of even date attached herewith
M/S PANKAJ MAN SINGH & CO.
Chartered Accountants

Sunil
Team Leader
Accounts
Place: Khori
Date :18.09.2020



Pankaj Sharma

Pankaj Sharma, FCA, DISA (ICAI)
Partner, Membership No. 096728
UDIN: 20096728AAAACC4209

[Signature]

Executive Director



Income & Expenditure Account

for the year ended on March 31st, 2020

Expenditure	Schedule	Amount	Income	Schedule	Amount
Expenditure met from Purpose Specific Grant	B	55,79,317.58	Purpose Specific Grant	B	55,79,317.58
Grant overspent		2,370.00	Grant Received during the year		60,81,907.25
			Add : Bank Interest		15,927.00
Excess of Income over Expenditure		10,260.31	Less : Grant Receivable as on 1.04.2019		4,58,161.75
			Less : Grant Committed as on 31.03.2020		60,354.92
			Surplus of Other Sources	B - I	12,630.31
TOTAL		55,91,947.89			55,91,947.89

Sunil

Team Leader
Accounts
Place: Khorl
Date :18.09.2020



Signed as per our separate audit report of even date attached herewith
M/S PANKAJ MAN SINGH & CO.
Chartered Accountants

Pankaj Sharma

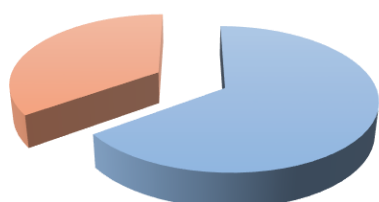
Pankaj Sharma, FCA, DISA (ICAI)
Partner, Membership No. 096728
UDIN: 20096728AAAACC4209

[Signature]

Executive Director

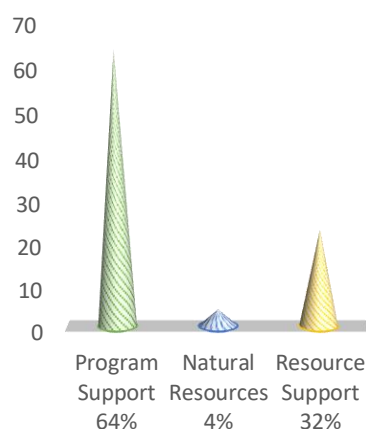


Resources Summary



■ Foreign Contribution 65%
■ Indian Contribution 35%

Resources during 2019 - 20



Resource utilization in 2019 - 20

The Organization

Social Centre for Rural Initiative and Advancement [SCRIA] www.scria.org
Email scriakhori@yahoo.co.in

Registration Act

Indian Societies Registration Act of 1860/ Haryana Registration, Regulation of Societies Act 2012
Date of Registration 31. 07. 1992 – 11.04.2017
Registration No. 618 - 00975
Foundation Year June, 1979

Chief Functionary Sunder Lal, Executive Director
Operational Area Haryana & Rajasthan
Headquarter Khori 123101, District Rewari, Haryana
Main office Rajasthan Derajsar 331022, Ratangarh, District Churu, Rajasthan

Funding Sources Govt. of India, State Government, National & International Development Agencies, Local Contributions

SCRIA's Team

Executive Director Sunder Lal
Team Leader Accounts Sunil Kumar
Head Administration Narender Kumar

Program Team Mohinder, Satbir, Bajrang, Jaiparkash, Prem, Suman, Rekha, Ramu Ram

Administration Team Gopal, Phep, Ramkaran, Manoj, Ranbir, Manju, Laxmi, Parmeshwari, Narender, Krishan

We gratefully acknowledge the support of more than **6,529 community volunteers**

Partners

★6,529 volunteers in 1105 villages ★Asahi India
★Australian High Commission ★British High Commission
★Canadian High Commission ★Canadian Hunger Foundation
★CAPART ★Canadian International Development Agency
★Department of Science & Technology ★District Rural Development Agency ★CTM - Italy ★Embassy of Federal Republic of Germany ★Embassy of Japan ★Embassy of Sweden ★European Union ★Friedrich Ebert Stiftung ★GTZ
★Habitat for Humanity International ★Helpage ★Indian Council for Agricultural Research ★Indo Global Social Service Society ★Industrial Development Bank of India
★Ministry of Environment & Forest ★MAHOU Foundation – Spain ★Ministry of Non Conventional Energy Sources
★Ministry of Panchayati Raj ★Ministry of Rural Development
★Misereor ★NABARD ★One Village - U.K. ★Oxfam - U.K.
★Rachna Club – Japan ★Rashtriya Mahila Kosh ★Rotary India Water Conservation Trust ★Royal Norwegian Embassy
★SIDBI ★Solidar' Monde ★Swedish International Development Agency ★UNDP ★Welthungerhilfe
★Youthreach

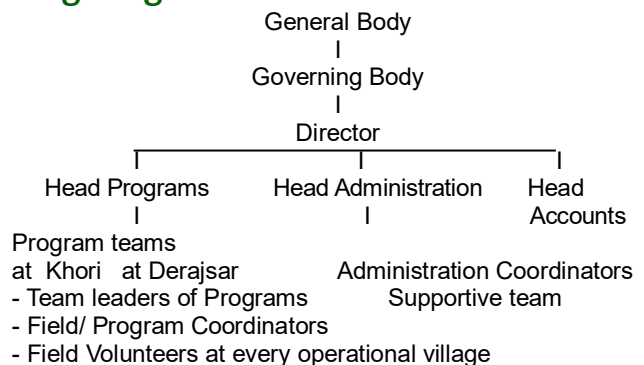
General Body Members

Ms. Bimla Devi, President – Village & P.O. Bas Duda, District Rewari, Haryana
Ms. Lalita Devi, Vice President – Village Gagadwas, P.O. Bawania, District Mahendergarh, Haryana
Mr. Ram Chander Punia, Treasurer – 12 MC Colony, Dadri, District Dadri, Haryana
Prof. Ranbir Singh, Secretary – H. No.120, Sector 3, Rewari 123401, Haryana
Ms. Kusum Lata, Associate Secretary – Village Kalaka, P.O. Gurdas Majara, District Rewari, Haryana
Dr. Jyotsna Chatterji, Member – Apartment 201, Block 44, Heritage City Complex, M.G. Road, Gurgaon - 122002, Haryana
Mr. Narendra Singh Rao, Member – D 26, Suncity Sector 7, Rewari 123401, Haryana
Mr. Avadhesh Kumar, Member – A16 Pundrik Vihar, Pitampura, New Delhi 110034
Mr. Romesh Bhattacharji, Member – D 1008, New Friends Colony, New Delhi 110065
Dr. Laj Pal Bharara, Member – 17/399 Chopasani Housing Board, Jodhpur, 342008, Rajasthan
Mr. Jagjit Singh, Member – Krishna Nagar, Col. Maha Singh Chowk, Rewari, Haryana

Governing Body Members

Ms. Bimla Devi, President – Village & P.O. Bas Duda, District Rewari, Haryana
Ms. Lalita Devi, Vice President – Village Gagadwas, P.O. Bawania, District Mahendergarh, Haryana
Mr. Ram Chander Punia, Treasurer – 12 MC Colony, Dadri, District Dadri, Haryana
Prof. Ranbir Singh, Secretary – H. No.120, Sector 3, Rewari 123401, Haryana
Ms. Kusum Lata, Associate Secretary – Village Kalaka, P.O. Gurdas Majara, District Rewari, Haryana
Dr. Jyotsna Chatterji, Member – Apartment 201, Block 44, Heritage City Complex, M.G. Road, Gurgaon - 122002, Haryana
Mr. Jagjit Singh, Member – Krishna Nagar, Col. Maha Singh Chowk, Rewari, Haryana

Organigram



SCRIA Actively Concentrates on

- mainstreaming gender equality & promoting gender perspective
- sensitizing on women's rights, entitlements & gender justice
- promoting a culture intolerant of gender violence
- organizing women for a meaningful partnership in development through political empowerment and participation in governance processes
- social empowerment of women & Gram Sabha members for social justice & local initiatives
- demystification & dissemination of information related to various issues, laws, legal processes & procedures and public schemes
- promotion of livelihood activities among low & marginal income families
- engaging teens & youth on social challenges
- rain harvesting, prudent water usage and ground water recharging
- soil conservation, vegetation promotion
- sustainable & organic dry land agricultural practices and livestock management
- environmental sanitation at household and community level



SOCIAL CENTRE FOR RURAL INITIATIVE & ADVANCEMENT

Head Quarter - Khori 123101, District Rewari, Haryana, India

Main Office Rajasthan – Derajsar 331022, Ratangarh, District Churu, Rajasthan, India

<http://www.scria.org> Email – scriakhori@yahoo.co.in